



The Winchester Star
Winchester's Online News Source

Winchester, Virginia
Order your favorite Winchester Star Photographs. [Click Here](#)

[HOME](#) | [SUBSCRIBE](#) | [CLASSIFIEDS](#) | [LINKS](#) | [COMMUNITY](#) | [CONTACT US](#) | [PAST ISSUES](#)

Welcome to The Winchester Star 109th Year

- Today's Weather -

You are currently logged in as [gerrykief](#)

Winchester, VA
36 °F / 2 °C
Overcast
at 9:00 AM



[Click for Forecast](#)

Friday, January 6, 2006

[Back To Home Page](#)

SITE FEATURES

- Homes Guide
- Auto Guide
- Auctions
- Help Wanted
- Lap By Lap **NASCAR**
- Place Classifieds
- Advertising Rates**
- Stocks
- Dear Abby
- Movie Listings
- TV Listings
- Online Games
- Other Newspapers

BYRD NEWSPAPERS

- The Winchester Star
- Daily News-Record
- The Warren Sentinel
- Shen. Valley-Herald
- Page News & Courier
- The Valley Banner



Virginia's Travel Information Service

'Art in the Region' Opens at SAC

3-Week Exhibition Showcases Work of 2 Artists — Drawing Workshop Set

By Maggie Wolff Peterson
Special to The Winchester Star

Powerful images fill the galleries of the Shenandoah Arts Council in a three-week exhibition of two artists who will share their insights in an all-day drawing workshop later this month at the Shenandoah Arts Academy.

"Art in the Region" opens today with a reception from 6 to 8 p.m. at the arts council building in Winchester. The show features the work of Leigh Ann Beavers and Agnes Carbrey.

Designed by council board member Geraldine Kiefer, the exhibition showcases work by artists from beyond Winchester.

January	
is	
a	
nice	
time	
to	
do	
art	
in	
the	
region,"	



- Nation**
- [Doctors S in St](#)
 - [Doctor: Ho Not in](#)
 - [11 U.S. T One De](#)
 - [Job Growt After N](#)
 - [Dems Confirmatio Virgini](#)
 - [Circuit December rev per](#)
 - [Commut tracks, injurir](#)
 - [Man char of miss](#)
 - [Archaeolog trove of per](#)
 - [NASCAR r as potential H](#)

Sports

- [MVP Ale Offensive P](#)
- [Source: C on Hiring](#)
- [Redskins Past Loss](#)
- [Cavs Fac Without Le](#)
- [Gagne Sudden V](#)



Leigh Ann Beavers (left) with "Permeation" and Leigh Ann Beavers with one of her monkey studies. The mixed media monotype collage, are exhibiting their work at a show, "Art in the Region" opening today with a reception from 6 to 8 p.m. at the Shenandoah Arts Council, 5100 Loudoun St., Winchester.
 (Photos by Scott Mason)

in large, monochromatic works.

"I'm a draftsman," she said. "These are about drawing."

Her subject is primates. Chimpanzees, Capuchins, and other monkeys stare, glare and bare their teeth in works in which bold line drawings are enhanced through collage.

"The drawing of the monkey [comes first]," Beavers said. "That's changed a lot, developed by adding collaged elements, other pieces of white paper that have different values of white."

Carbrey, whose work is in the corporate collections of Capitol One, the Richmond Times-Dispatch, and the Federal Reserve Bank, integrates organic images with geometric forms in pieces she said are felt from the inside out.

A piece, "Permeation," features a skeletal figure infused with geometrics. Carbrey describes the image as "pollution of the environment as I would experience it in my own body."

It is a female form that is permeated with geometric shapes, she said.



Other pieces explore bold coloration applied to graphite drawings on canvas. A triptych, "Canoes at Crossing,"





Artist Leigh Ann Beavers' monkey studies are part of an exhibit opening today at the Shenandoah Arts Council in Winchester. An assistant professor at Hollins University in Roanoke, Beavers emphasizes strong lines in large, monochromatic works. (Photos by Scott Mason)

was created when Carbrey faced a change in her life that felt like a passage across a divide.

Another piece involves the image of a fawn, which Carbrey deliberately drew with her weaker, left hand, then surrounded with intense hues of blue, red and orange. The result juxtaposes powerful colors against a fragile form.

Additionally, Carbrey brought for exhibition a

provocative piece so large it had to be unstretched and rolled for transport. At 6-feet across and 5-feet high, "it's really in your face," she said.

Carbrey described the piece, an exploration of the human form, as two lower halves, joined in the middle.

Although the piece has been exhibited in larger cities, Carbrey isn't sure how the Winchester art audience will take it. "It's the most outrageous thing in the show," she said.

Art in the Region runs through Jan. 28 at the council, 811 S. Loudoun St. The drawing workshop, Jan. 28, will run from 9 a.m. to 4 p.m. at the John Kerr Building, 23 S. Cameron St.

"The show came first. The drawing workshop evolved from that," Kiefer said.

Intended for practiced artists as well as novices, the workshop allows Beavers and Carbrey each a half-day for lecture and instruction.

Beavers' class involves process drawing, the practice of remaining with one image on one



Are frivolous lawsuits raising health costs?

Yes



Survey Re

71%



Yes

AMA AMERICAN MEDICAL ASSOCIATION

www.patientsaction.org Ads by Google

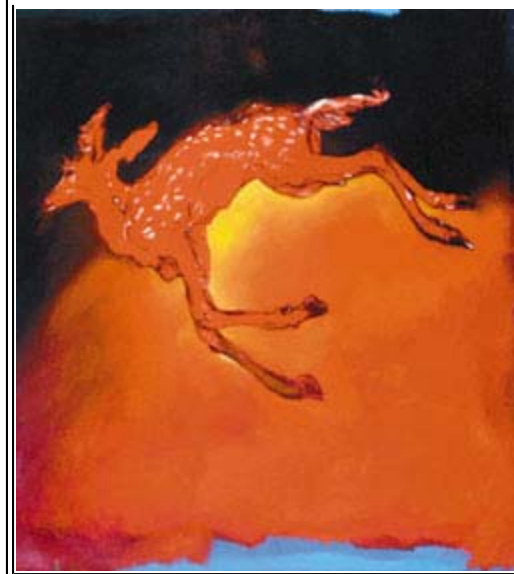
sheet of paper, and working it exhaustively.

It is dedicated towards the process of drawing more than a finished product, Kiefer said.

“The marks that are made will lead to other marks,” she said. “There is drawing and deliberate erasing. This goes on for an hour or so.”

Carbrey’s class starts with slides, Kiefer said, using images that can only be seen with an electron microscope or by satellite.

The point, Kiefer said, is to emphasize a microscopic and macroscopic world view. Students will make charcoal drawings based on this theme.



“Crossing Over” (above) on canvas and “Dead Fawn” (below) on Belgian linen by Agnes Carbrey are featured in an art show, “Art in the Region.” The show begins today and continues through Jan. 28 at the Shenandoah Arts Council building in Winchester.

(Photos by Scott Mason)



A reception from 5:30 to 6:30 p.m. Jan 28 with the artists will conclude the program.

Registration for the class will close Jan. 14. Checks, payable to the Shenandoah Arts Council, should be sent to the council office at 811 S. Loudoun St. The fee is \$60 and \$25 for students.

“Anyone can apply the perceptual and experiential skills [to make art],” Kiefer said. “Everyone has within himself or herself the perceptual skills that can be channeled onto paper.”

Gallery hours at the arts council are 10 a.m. to 3 p.m. Wednesday and Thursday, 11 a.m. to 3 p.m. Friday and Saturday, and 1 to 3 p.m. Sunday. Call 667-5166.

[Back to Home Page](#)

[Email this article to a friend](#)

Click here to review past issues of www.winchesterstar.com
[Today](#) | [Jan. 5](#) | [Jan. 4](#) | [Jan. 3](#) | [Dec. 31](#) | [Dec. 30](#) | [Dec. 29](#)

[ARCHIVES](#)

Copyright © 2002-2003 by The Winchester Star - All Rights Reserved.

[PRIVACY POLICY](#)

This site was designed by Iveka

iveka.com